

MEV Spider

Mechanical Extract Ventilation



About

The MEV Spider from EnviroVent is a low energy, continuous mechanical extract ventilation system designed with multiple extract points to simultaneously draw moisture-laden air out of the wet rooms, whilst minimising the migration of humidity to other rooms.

Features & Benefits

- Fitted with Ultra Low Watt DC motor technology
 - Intelligent humidity tracking
 - 9 spigot connection points
 - 3 Ø100mm spigots supplied
 - Rapid installation
 - Vertical or horizontal install
 - Ease of maintenance
 - Unobtrusive
 - Low noise
 - Cost effective
 - Lowest carbon footprint
 - SAP Appendix Q eligible
- Note: 'E' rating only applicable to MEVS (2 speed option)

How does it work?

The extract unit is centrally located in a cupboard or loft, with ducts running from the unit to the kitchen, bathroom, en-suite and other wet zones. Ideal for use in houses, apartments and communal residences, the unit provides high centrifugal performance with low running noise. The MEV Spider is SAP Appendix Q eligible and comes with a full five year guarantee.

Rapid Installation

The compact size of the unit and its unique spigot configuration allows easy installation into any vertical or horizontal application and is ideal for restricted spaces. With up to nine spigot connection points the unit offers optimal versatility.

The easy push button commissioning pad enables the installer to correctly set the required airflow rate quickly and effectively.



Intellitrac® Controls

The system continuously operates at a low level to ensure that the home is correctly ventilated, providing all year round good indoor air quality. Incorporated within the MEV Spider is the unique Intellitrac® Technology as standard, which constantly monitor the humidity level, meaning no user intervention is required.

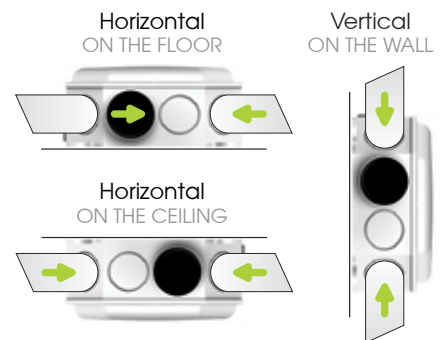
As humidity rises and falls, the motor speed rises and falls in direct correlation. This controls condensation quietly and efficiently, reducing the periods of time when the system operates on maximum speed, saving energy.



Ease of Installation

The compact size of the unit and its unique spigot configuration allows easy installation into any vertical or horizontal application and is ideal for restricted spaces.

With up to 9 spigot connection points the unit offers optimal versatility. Self sealing duct connections and a quick fit bayonet spigots provide convenience for the installer.



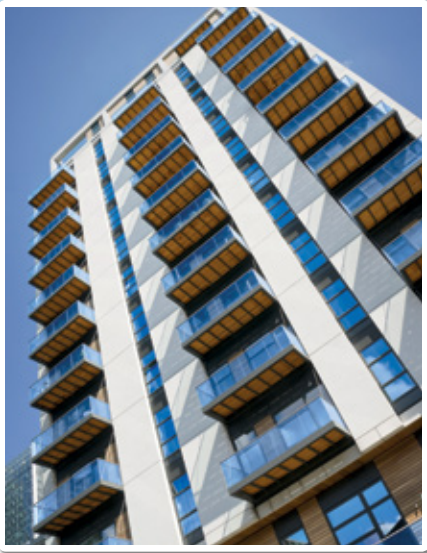
The EnviroVent MEV Spider is manufactured in Harrogate, UK.



This product is supplied with a five year guarantee.



The packaging is made from recycled material.

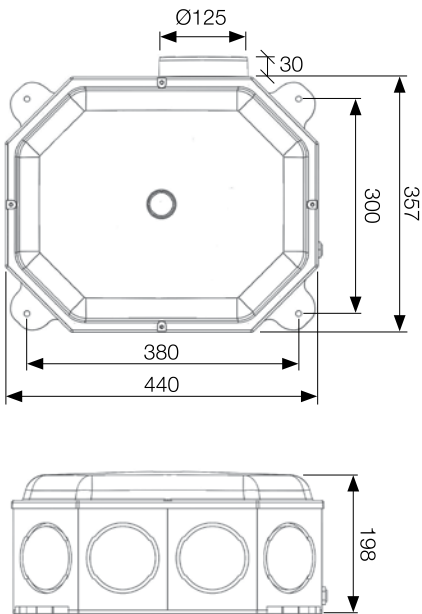


Control Options

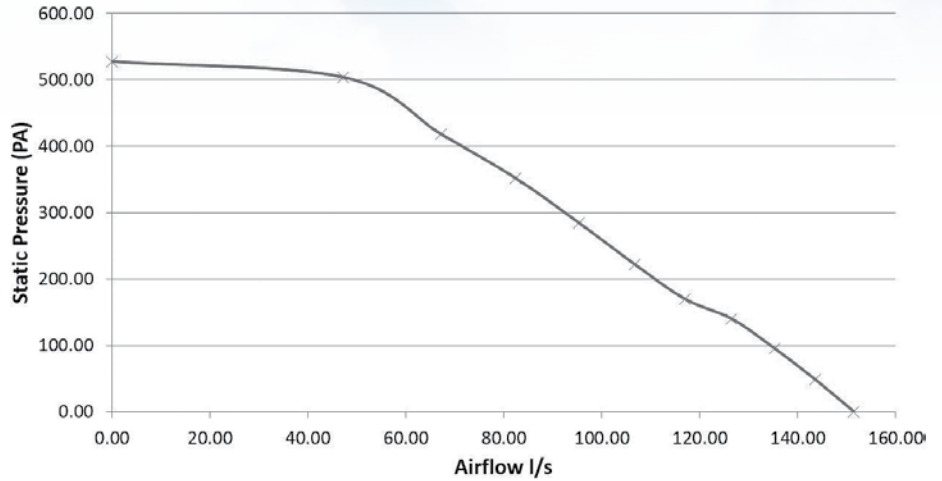
The MEV Spider is supplied with a remote controlled boost switch as standard offering ultimate control to the user. The unit is fully commissionable to high and low rates to ensure optimum performance and efficiency.



Dimensions (mm)



Performance Curve



Technical Specifications

Product
Innovative and low energy unit which has been designed to provide continuous mechanical extract ventilation in accordance with current building regulations.

Application Suitability
Suitable for use in mid-sized houses up to 220m³ and apartments of up to 180m³ to be installed in any vertical or horizontal application either in a hallway cupboard or loft space. The unit shall be designed with up to 9 spigot connection points with quick fit bayonet connections.

	Exhaust Terminal Configuration - Kitchen + Additional Wet Rooms					
	+1	+2	+3	+4	+5	+6
Total Flow Rate (l/s)	21.0	29.0	37.0	45.0	53.0	61.0
Specific Fan Power (W/l/s)	0.36	0.32	0.33	0.32	0.35	0.36

Motor
The unit shall incorporate the Ultra Low Watt DC motor technology with sealed for life ball bearings designed to operate continuously at a pre-set 'background' rate.

Fan
The unit shall incorporate a backward curved centrifugal fan.

Construction
The unit shall be constructed from durable white plastic. The lid is a vacform in ABS material.

Servicing / Maintenance
There are no special requirements for any maintenance within a five year period. If fitted with cone filters (located at extract valves), maintenance is recommended every 12 months depending on environmental conditions. The unit shall be easy to clean by simply removing the lid and motor plate.

Guarantee
The unit shall be covered by an on-going, repeatable 5 year warranty, subject to completion of the specified maintenance.

Controls
The standard unit shall be fitted with Intellitrac® humidity tracking system, commissionable to trickle and boost to suit the application and satisfy Part F. The unit shall also be fitted with a choice of either wireless or manual override switching.

Accreditation
SAP Appendix Q eligible

SAP Appendix Q Performance

Exhaust Terminal Configuration - Kitchen + Additional Wet Rooms	Fan Speed Setting	Specific Fan Power (W/l/s)	EST Best Practice Performance Compliant
Kitchen + 1 additional wet room	100% Variable	0.36	Yes
Kitchen + 2 additional wet rooms	100% Variable	0.32	Yes
Kitchen + 3 additional wet rooms	100% Variable	0.33	Yes
Kitchen + 4 additional wet rooms	100% Variable	0.32	Yes
Kitchen + 5 additional wet rooms	100% Variable	0.35	Yes
Kitchen + 6 additional wet rooms	100% Variable	0.36	Yes

Options & Ancillaries

Description	Code(s)
System 125 Round Pipe to Fitting (Male to Female)	EV-SC125PF
System 125 Round Pipe to Fitting (Male to Male)	EV-SC125PP
Ø100mm Rigid Ducting (3M Length)	1RD 100 X 3M
Flexible Insulated Hose Ducting	1RD INSFLEX 125
White Powder Coated Metal Ceiling Valve	1DIF EXTRACT 100



Scan the QR code to find out more about the product or visit: envirovent.com/mevspider

Order Code

- MEVS-WH Standard wireless unit with humidity tracker and remote control
- MEVS Hard wired unit with 2 speed option
- MEVS-H Hard wired unit with humidity tracker